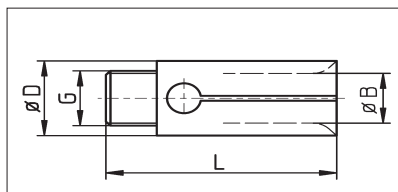
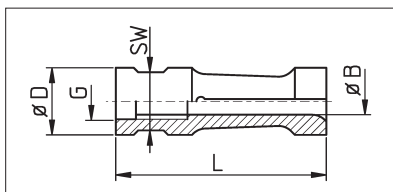


Spannhülse für Lademagazine
IEMCA mit Aufschraubgewinde

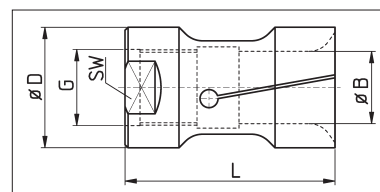
Bar feed collet for bar loaders
IEMCA with thread



Zeichnung 1 / drawing 1



Zeichnung 2 / drawing 2



Zeichnung 3 / drawing 3

Bestell-Nr. order-no.	D	Zeichnung drawing	G	L	SW	B von from	B bis to
SPHI 045	4,5	1	M3x0,5	31	-	1,0	3,0
SPHI 07	7,5	2	M5x0,5	40	6	1,5	6,5
SPHI 10	10	2	M6x0,75	40	8	1,5	9,0
SPHI 12	12	2	M7x0,75	42	10	1,6	10,5
SPHI 15	15	2	M8x1	42	13	3,0	13,0
SPHI 16	16	2	M8x1	42	14	6,0	15,0
SPHI 18	18	2	M8x1	42	15	11,0	16,5
SPHI 20	20	2	M10x1	59	17	2,5	18,5
SPHI 23	23	2	M10x1	59	19	11,0	21,0
SPHI 25	25	2	M10x1	59	22	8,0	23,0
SPHI 27	27	2	M10x1	59	24	16,0	25,5
SPHI 30	30	2	M10x1 *	65	27	6,0	28,0
SPHI 31 **	31	2	M10x1 *	65	27	8,0	29,0
SPHI 32	32	2	M10x1 *	65	30	6,0	30,0
SPHI 33	33	2	M10x1 *	65	30	8,0	32,0
SPHI 34	34	2	M25x1,5	65	32	5,0	32,0
SPHI 35	35	2	M25x1,5	65	32	19,0	33,0
SPHI 36	36	3	M25x1,5	65	34	20,0	34,0
SPHI 40	40	3	M25x1,5	70	36	10,0	37,0
SPHI 42	42	3	M25x1,5	70	36	20,0	40,0
SPHI 45	45	3	M25x1,5	72	41	20,0	43,0
SPHI 46	46	3	M25x1,5	72	40	20,0	44,0
SPHI 50	50	3	M25x1,5	80	46	43,0	48,0
SPHI 52	52	3	M25x1,5	80	46	45,0	50,0
SPHI 54	54	3	M25x1,5	80	50	47,0	52,0
SPHI 55	55	3	M25x1,5	80	50	20,0	54,0
SPHI 56	56	3	M25x1,5	80	50	20,0	54,0
SPHI 58	58	3	M25x1,5	80	50	20,0	54,0
SPHI 60	60	3	M25x1,5	80	55	20,0	57,0
SPHI 65	65	3	M25x1,5	80	60	56,0	63,0
SPHI 70	70	3	M25x1,5	80	65	60,0	68,0
SPHI 75	75	3	M25x1,5	80	65	67,0	72,0
SPHI 80	80	-	M25x1,5	80	Quer- bohrungen cross holes	50,0	77,0

* Auch mit folgenden Gewinden lieferbar: **M17x1 ; M25x1,5 ; M18x1,5 ; M18x1,5L**

* Also available with threads:

** auch für Stama-Magazine

** Also for Stama loaders

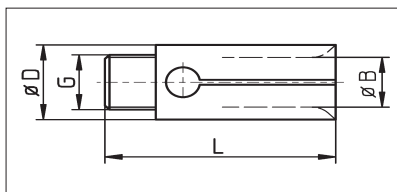
Dünnwandige Spannhülsen auch als "Longlife" lieferbar
Thin-walled bar feed collets also available in "Longlife"-type

Auch als Spanndorn lieferbar
Also available for internal gripping

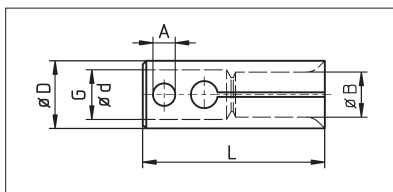


Spannhülse für Lademagazine CAV

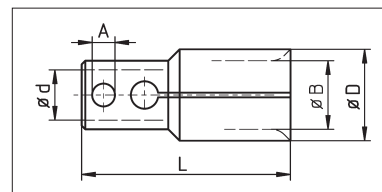
Bar feed collet for bar loaders CAV



Zeichnung 1 / drawing 1



Zeichnung 2 / drawing 2



Zeichnung 3 / drawing 3

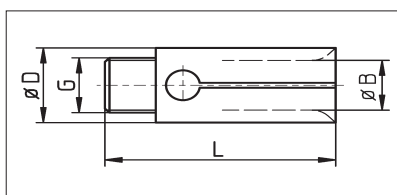
Bestell-Nr. order-no.	D	G	L	A	B von from	B bis to	Magazin Magazine.
SPHCAV 07	7	M6 x 1 LH	40	--	1,5	5,9	CAV16/20L-IS
SPHCAV 10	10	M6 x 1 LH	40	--	2	8,5	CAV12M-IS
SPHCAV 12	12	M6 x 1 LH	40	--	8,5	10,5	
SPHCAV 15	15	10	55	6	3	14	CAV16/20L-IS
SPHCAV 17	17	10	55	6	14	16	
SPHCAV 19	19	10	56,5	6	16	17	CAV20L-IS
SPHCAV 21	21	10	56,5	6	17	19	
SPHCAV 25	25	16	76	8	5	22	
SPHCAV 32	32	16	76	8	15,5	29	
SPHCAV 34	34	16	76	8	19	31	

Dünnwandige Spannhülsen auch als "Longlife" auf Anfrage lieferbar
Thin-walled bar feed collets available in "Longlife"-type on request



Spannhülse mit Aussengewinde

Bar feed collet with external thread



Bestell-Nr. order-no.	D	G	L	B von from	B bis to
SPHAG 055	5,5	M3	31	1,0	4,0
SPHAG 08	8,0	M6 x 1	40	1,0	6,0
SPHAG 115	11,5	M6 x 1	40	6,0	10,0
SPHAG 15	15,0	M6 x 1 LH	40	3,0	13,0