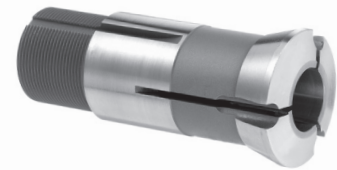
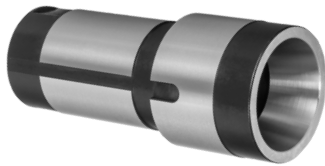


Druckhülsen und Spannmittel
Collet Sleeves and clamping tools

Hauptspindel - *Main-Spindle*

| Druckhülse - Bestell-Nr. collet sleeve - order-no. | f. britsch | Spannzange Collet | f. britsch | Führungsbüchse Guide Bush |
|---|------------|--|------------|------------------------------|
| Standard <i>Standard</i> | | | | |
| 37024 / 548-23-010 | | E 145 F25 76-64 | | T223 / 22.001 / B261 |
| 54000 / V548-23-010 (verstiftet 3 mm am Konus / <i>pinned 3 mm in Cone</i>) | | E 145 F25 76-64 (Nut 3 mm im Konus / <i>Slot 3 mm in Cone</i>) | | T223 / 22.001 / B261 |
| Erweiterung <i>Expansion</i> | | | | |
| 37026 / STAR-SR20R/A/F27 | | E 147 F27 76-22 | | T223S M27x1 |
| 22114 (verstiftet 3 mm am Konus / <i>pinned 3 mm in Cone</i>) | | E 147 F27 76-22 (Nut 3 mm im Konus / <i>Slot 3 mm in Cone</i>) | | T223S M27x1 |
| Reduzierung <i>Reduction</i> | | | | |
| 63090 | | E 120 F15 76-580 | | T223 / 22.001 / B261 |

Gegenspindel - *Sub-Spindle*

| Druckhülse - Bestell-Nr. collet sleeve - order-no. | f. britsch | Spannzange Collet | - |
|---|------------|--|---|
| Standard <i>Standard</i> | | | |
| 41008 / 573-72-010 | | E 145 F25 76-64 | - |
| 41058 / V573-72-010 (verstiftet 3 mm am Konus / <i>pinned 3 mm in Cone</i>) | | E 145 F25 76-64 (Nut 3 mm im Konus / <i>Slot 3 mm in Cone</i>) | - |
| Reduzierung <i>Reduction</i> | | | |
| 63087 | | E 109 F10 76-86 | - |
| 63080 / STAR-ECAS20/B/F15v15 (15 mm verlängert / <i>15 mm extended</i>) | | E 120 F15 76-580 | - |
| Erweiterung <i>Expansion</i> | | | |
| 41031 / SET-ECAS20/B/F27 | | E 147 F27 76-22 | - |
| 59063 (verstiftet 3 mm am Konus / <i>pinned 3 mm in Cone</i>) | | E 147 F27 76-22 (Nut 3 mm im Konus / <i>Slot 3 mm in Cone</i>) | - |

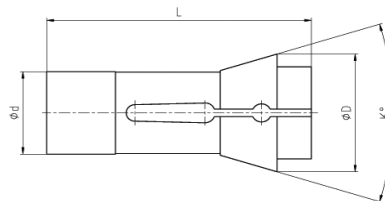
Weitere Ausführungen auf Anfrage lieferbar
Further Types available on request

Sie dürfen uns im Zweifelsfall jederzeit kontaktieren.
Wir beraten Sie gerne bezüglich Ihrer Spannmittel für Ihre  Maschine

*Please do not hesitate to contact us
if you have any questions regarding your clamping tools for your  machine.*

Druckspannzangen Reihe 100

Dead Length Collets Series 100 / F-Type

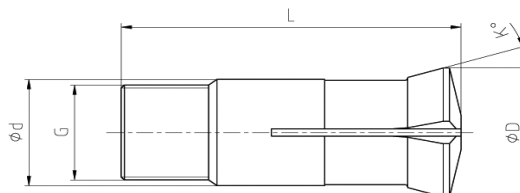


| Bestell-Nr. order-no. | F-Nummer F-Number | US-Code | Ø d | Ø D | L | K | Maximale Bohrung in mm Maximum Bore in mm | | |
|--------------------------|----------------------|--------------|-----------|-----------|-----------|------------|--|-------------|-------------|
| | | | | | | | Ø | 6-kt | 4-kt |
| 109 E | F10 76-86 | TF 10 | 10 | 15,5 | 47,5 | 40° | 8,0 | 7,0 | 5,5 |
| 120 E | F15 76-580 | TF 15 | 15 | 21 | 64 | 32° | 13,0 | 11,0 | 9,0 |
| EF16 / 1212E | F16 76-1076 | TF 16 | 16 | 21 | 64 | 32° | 13,0 | 10,0 | 8,0 |
| 138 E | F20 76-87 | TF 20 | 20 | 28 | 67 | 32° | 16,0 | 14,0 | 11,0 |
| 145 E Standard | F25 76-64 | TF 25 | 25 | 35 | 77 | 32° | 21,0 | 17,0 | 14,0 |
| 147 E | F27 76-22 | TF 27 | 27 | 38 | 72,7 | 30° | 23,0 | 20,0 | 16,0 |
| EF37 / 1536E | F37 76-740 | TF 37 | 37 | 47 | 92 | 32° | 32,0 | 27,0 | 22,0 |
| EF40 | F40 | EF 40 | 40 | 47 | 92 | 32° | 36,0 | - | - |
| 171 E | F42 76-99 | | 42 | 55 | 94 | 30° | 37,0 | 32,0 | 26,0 |
| 173 E | F48 76-81 | TF 48 | 48 | 60 | 94 | 30° | 42,0 | 38,0 | 30,0 |

Weitere Spannzangentypen, Sonderdruckspannzangen und Sonderprofile auch mit Vorbau kurzfristig lieferbar!
Further types of Collets, special Collets with customized Profiles also with extended nose quickly available!

Verstellbare Führungsbüchsen mit Hartmetall Einsatz

Adjustable Guide bushes with carbide insert



| Bestell-Nr. order-no. | Schweizer Code Swiss Code | US-Code | Ø d | Ø D | Gewinde Thread | L | K | Maximale Bohrung in mm Maximum Bore in mm |
|--------------------------|--|--------------|-----------|-----------|-------------------|-----------|------------|--|
| I 353 | T16-59 / 8.001 / J6R | TD10 | 16 | 20,5 | M 14 x 1 | 59 | 16° | 1,0 - 12,0 |
| F 853 | T18-59-M16.1 / 166.001 / B212A | | 18 | 21,8 | M 16 x 1 | 59 | 30° | 1,0 - 13,0 |
| F 391 | T22-68-M22.1 / 39.001 / J7AR | TD20R | 22 | 29 | M 22 x 1 | 68 | 16° | 3,0 - 18,0 |
| T 223 Standard | T28-82-M25.1 / 22.001 / B261 | TD25S | 28 | 34 | M 25 x 1 | 82 | 16° | 3,0 - 21,0 |
| T 223S | T28-82-M27.1 / 22.010 / erw. Durchlass /spindle expansion | | 28 | 34 | M 27 x 1 | 82 | 16° | 21,0 - 23,0 |
| T 229 | T42-82-C16 / 28.001 / J9 | TD32S | 42 | 49 | M 40 x 1 | 82 | 16° | 3,0 - 32,0 |
| T 229S | T42-82-C16M / erw. Durchlass /spindle expansion | | 42 | 49 | M 42 x 1 | 82 | 16° | 30,0 - 36,0 |
| T 248 | T48-82 / 464.001 | STM38 | 48 | 54 | M 46 x 1 | 82 | 16° | 2,0 - 38,0 |

Weitere Führungsbüchsentypen, Sonderführungsbüchsen und Sonderprofile kurzfristig lieferbar!
Further types of guide bushes, special guide bushes and customized profiles quickly available!